

ALLEGRO

Wireless Internet Radio by Grace Digital

User's Guide

Model No. GDI-IRD4000

GRACE
DIGITAL AUDIO

User's Guide Table of Contents

Important Safety Instructions and Warnings.....	4
Quickstart Guide.....	7
What you need before you can use your Internet radio	7
Contents.....	9
Radio Connections.....	9
Radio and remote control functions and controls	10
Displays icons	11
Steps to Connect Your Radio to Your Wireless Network.....	12
Step 1 - Power up the radio (Power Adapter, NiMH & LED Indicator)	12
Step 2 - Scan for a wireless network connection	13
Step 3 - Connect to the wireless network.....	14
Choosing a radio station to listen to	15
Choosing a Pandora radio station.....	17
Changing the volume	17
Storing a radio station in a preset.....	17
Playing a preset radio station	18
Requesting a station that is currently unavailable.....	18
Stations which allow you to choose what you listen to	18
Setting the clock.....	19
Setting the alarm	21
Setting the sleep timer	23
Configuring 'My Stuff'.....	23
Registering an account on Grace Digital Audio's website.....	23
Configuring 'My Profile'	24
Configuring 'My Stations'	24
Configuring 'My Streams'	24
Configuring 'My Podcasts'.....	25
Configuring 'My Pandora'	25
Accessing Pandora Feedback Menu	26
Media Player Quickstart Guide.....	27
Setup your Windows PC to allow the radio to access your audio files via Windows Shares	27
Locate the shared audio files using the radio.....	29
Listening to a single shared track.....	29
Listening to a complete shared album	30

Arranging (Queuing up) tracks for playback later.....	30
Arranging (Queuing up) albums for playback later.....	31
Controlling playback.....	31
Browsing the list of tracks currently (queued up) for playback.....	31
Removing tracks from the list (queue)	32
Playing tracks in random order	32
Playing tracks in the list (queue) repeatedly	32
Set up a Windows PC to allow the radio to access your audio files via a UPnP server	33
Locating and playing media files using the radio and UPnP	35
Browsing the list of tracks currently arranged (queued up) for playback.....	36
Arranging (Queuing up) UPnP tracks for playback later	36
Arranging (Queuing up) albums for playback later.....	36
Controlling playback.....	37
Removing tracks from the list (queue)	37
Playing tracks in random order	37
Playing tracks in the queue repeatedly	38
Settings Menu	38
Choosing desired option from the Configure menu.....	38
<Network Config>	39
<Upgrade Firmware>	39
<Language>	39
<Factory Reset>.....	39
<Register>.....	39
<Clock Setup>.....	39
<Backlight>	40
<UPnP>.....	40
<Wi-Fi Strength>	40
<Other Cool Stuff>	40
Troubleshooting	41
Specifications	42
License Information and Warranty.....	42
Customer Service and Support	44
Appendix.....	44
Step 1: Set Up Media Sharing in Windows Media Player 11	44
Step 2: Play Music on the Internet Radio	47

Important Safety Instructions and Warnings

Please read before installation

If this Internet radio has been moved from a cold place to a warm place, DO NOT plug it in for 2-3 hours (e.g. from a cold car boot to a warm room). There is a possibility that moisture may have condensed in the Internet radio, this can cause damage to your Internet radio. To avoid damage please unpack your Internet radio and allow it to stand at room temperature for 2-3 hours before use. This will help any moisture evaporate and prevent unnecessary damage to your Internet radio.

POWER PLUG Ensure that the power plug is easily accessible.

COVERS Do not remove any fixed covers as this may expose dangerous voltages.

WEATHER It is advisable to unplug an external antenna during a thunderstorm.

VENTILATION The ventilation holes on the casing of your Internet radio prevent it from over heating. Do not block or cover these holes, especially with cloth or paper. Do allow a minimum distance of 5cm around the apparatus for sufficient ventilation.

DAMAGE Never use your Internet radio if it is damaged in any way. Always place your Internet radio on a flat level surface avoiding anywhere which may be subject to strong vibration.

TEMPERATURE Avoid extremes of temperature, either hot or cold, place your Internet radio well away from heat sources such as radiators or gas/electric fires.

DO NOT Use this apparatus in humid or tropical climates.

MOISTURE Do not allow your Internet radio to be exposed to rain, moisture or dust. If any liquid is spilt into your Internet radio it can cause serious damage. If you spill any liquid into your Internet radio switch it off at the mains immediately. Contact your store immediately.

CAUTION: Do not open any covers and do not repair yourself. Qualified personnel must carry out repair work.

WARNING:

- To reduce the risk of fire or electrical shock, do not expose the product to rain or moisture.
- The product shall not be exposed to any dripping or splashing. Objects filled with liquids, such as vases, should not be placed on the product.
- No open flame sources, such as lighted candles, should be placed on the product.
- Keep the remote control battery away from children. It may cause a fire or chemical burn if mishandled. Do not recharge, disassemble, heat above 100° C (212° F), or incinerate. Dispose of used batteries promptly. Replace only with a battery of the correct type and model number.

CAUTION: please READ and FOLLOW the important safety instructions carefully

1. Retain instructions - the safety instruction should be retained for future reference.
2. Follow instructions -all instructions should be followed.
3. Heed warnings - all warnings on the product and in the user's guide should be adhered.
4. Power source - the product should be connected to a power supply only of the type specified in the user's guide or as marked on the product.
5. Do **NOT** install or use Alkaline (disposable) batteries.
6. Install 6 new AA NiMH rechargeable batteries with the same capacity ONLY (not included) or the included AC power adapter to power the GDI-IRD4000
7. Do **NOT** mix NiMH batteries that may have different capacities
8. Do **NOT** mix old and new or charged and empty NiMH batteries
9. Power cord protection - protect the power cord from being walked on or pinched, particularly at plugs and convenience receptacles.
10. Water and moisture - the product should not be used near water (for example, near a bathtub, washbowl, kitchen sink, laundry tub, in a wet basement, or near a swimming pool, etc)
11. Heat - keep the product away from heat sources such as radiators, heat registers, stoves or other appliances that produce heat.
12. Damage requiring service - the product should be serviced by qualified service personnel if:
 - a) the power supply cord or the plug has been damaged: or
 - b) objects have fallen or liquid has been spilled into the product: or
 - c) the product has been exposed to rain: or
 - d) the product does not appear to operate normally or exhibits a marked change in performance: or
 - e) or the product has been dropped, or the enclosure damaged.
13. Servicing - the user should not attempt to service the product. All servicing should be referred to qualified service personnel.
14. Unplug the power adapter during lightning storms or when unused for long periods of time.

ADVISORY

This Product is intended for **North American markets**. The GRACE Wireless Internet Radio GDI-IRD4000 is in compliance with the essential requirements and other relevant provisions of Directive 1999/5/EC

ADVISORY

FCC Compliance and Advisory Statement: This device complies with **Part 15** of the **FCC Rules**. Operation is subject to the following two conditions: 1) this device may not cause harmful interference, and 2) this device must accept any interference received, including interference that may cause undesired operation

NOTE: This equipment has been tested and found to comply with the limits for a Class B digital device, pursuant to **Part 15** of the **FCC Rules**. These limits are designed to provide reasonable protection against harmful interference in a residential installation. This equipment generates, uses and can radiate radio frequency energy and, if not installed and used in accordance with the instructions, may cause harmful interference to radio communications. However, there is no guarantee that interference will not occur in a particular installation. If this equipment does cause harmful interference to radio or television reception, which can be determined by turning the equipment off and on, the user is encouraged to try to correct the interference by one or more of the following measures:

To comply with FCC RF exposure compliance requirements, a separation distance of at least 20 cm must be maintained between the antenna of this device and all persons. This device must not be co-located or operating in conjunction with any other antenna or transmitter.”

WARNING

This product may contain chemicals listed in **Proposition 65** (http://www.oehha.ca.gov/prop65/prop65_list/Newlist.html) that may be known to cause cancer, birth defects or other reproductive harm

QUICKSTART GUIDE - 1st time set up

What you need before you can use your Internet Radio:

A broadband internet connection is required.

A wireless (Wi-Fi) modem or router connected to your broadband (cable or DSL) internet.

NOTE: IF your wireless (Wi-Fi) network is password (WEP or WPA) protected, please obtain your password before proceeding to Step 1. All passwords are UPPER and lower case sensitive.

Step 1: Plug the round jack from the power cord into the back of the radio and the other end into a wall outlet. The display should turn on within approximately 4 seconds and flash a series of messages. The messages that are briefly displayed will be 'Grace Digital Radio', 'Starting...' then 'Scanning'.

NOTE: If your radio does not automatically start scanning when plugged into power the 1st time, please press the power button to turn your radio on and to view the main Internet radio menu. Scroll the large dial to the left or right until the word 'settings' is in brackets {}. Press the large dial inwards to select 'settings'. On the top of the next screen please select 'Network Configurations' by pressing the large dial inwards. (To go back to previous menus at any time press the 'back' button on the radio). On the top of the next screen please select 'Scan for Networks' by pressing the large dial inwards.

Step 2: The radio is now scanning for available Wi-Fi (wireless) network(s) in your area. After the scanning process is complete, the radio will display the names (also referred to as SSID's) of one or more wireless networks that are within range. Scroll the large 'Select/Menu' dial to the left or right until the name of your network (SSID) is highlighted by placing the name of the router between the brackets {}, for example {your wireless network}. Once your router is highlighted, push the large Select dial inwards to select your network.

NOTE: If your radio does not display the name of your wireless network (SSID) please make sure that your router is transmitting in 802.11b/g mode. Additionally, please make sure you are within range of your wireless network.

Step 3: The display will now prompt you to enter in your network's key. This 'Key' is the same key (password) you use to connect a wireless device (laptop, mobile phones, game console etc) to your Wi-Fi (wireless) network. This key or password is also sometimes called a 'WEP' or 'WPA' password or 'code'. If you do not know your password, please contact the person or company that set up your network to obtain your password.

NOTE: All passwords are upper and lower case sensitive. Thus letters must be entered correctly using upper or lower case as was used to set the password originally. Numbers are not case sensitive. To enter in your password, scroll the large 'Select' dial to the right or left until the 1st letter or number in your password is located in the center of the radio's display. Press the large dial inward to select the 1st letter. Continue this process until the final letter or number is selected.

NOTE: If you make a mistake at anytime, press the 'back' button to erase the letter(s) or number(s) and select then select the correct entry. After the final letter or number in your password is selected rotate

the large dial until the word 'END' is in the center of your display. The word 'END' is located in front of the beginning of the alphabet. Choose 'END' by pressing the large dial inward. The radio will display 'connecting to', followed by a series of messages. When the radio has successfully connected the main menu will be displayed.

Step 4: You are now connected to your Wi-Fi network and the internet. To listen to a station, choose 'Internet Radio' on the main menu. The radio will then request the most recent radio station update and display 'Station update from Reciva'. When the station update is complete the radio will display various search methods: 'location', 'genre', and 'search' etc. Choose the method you desire and continue through the menu until you see a list of stations. Select the station by pushing the large select dial inward when the brackets are on both sides of the station's name. After the station finishes buffering turn the volume up on the radio until you hear the music out of the built in speaker.

If you are unable to listen to the station you selected please try other stations (pressing the back button will take you to the previous menu to choose another station). Some stations may not currently be online. If you are unable to access or listen to any station you select please see the trouble shooting section in this manual.

NOTE: you do NOT need to register your radio to listen to our over 16,000 free radio stations. However, if you would like to register your radio to experience premium music selections please refer to the "Registering your radio / creating an account at HYPERLINK ["http://www.grace.reciva.com"](http://www.grace.reciva.com) www.grace.reciva.com" section of this manual. You can only register your radio and create an account if you radio is successfully connected to your Wi-Fi network and internet connection.

FAST PLAY OF RADIO STATIONS

As a factory default setting when you turn your radio off (in standby mode - only the clock is showing on the display) your radio will be disconnected from your wireless network. Each time you turn your radio on, the radio will reconnect to your network before buffering and connecting to a station to play. If you would like your radio to start playing the current radio station quicker you can choose the radio to keep its Wi-Fi connection on your wireless network. To set this function go to the radios' main menu (Internet radio choice is at the top of the menu) scroll until you reach the bottom of the menu and choose 'settings'. In the settings menu choose 'Network Config'. In the Network Config menu scroll to the bottom of the menu and choose 'wireless Standb' then choose 'yes'. Your radio will now connect and play your station much quicker when you turn your radio on.

Contents

Allegro GDI-IRD4000

Power Adapter

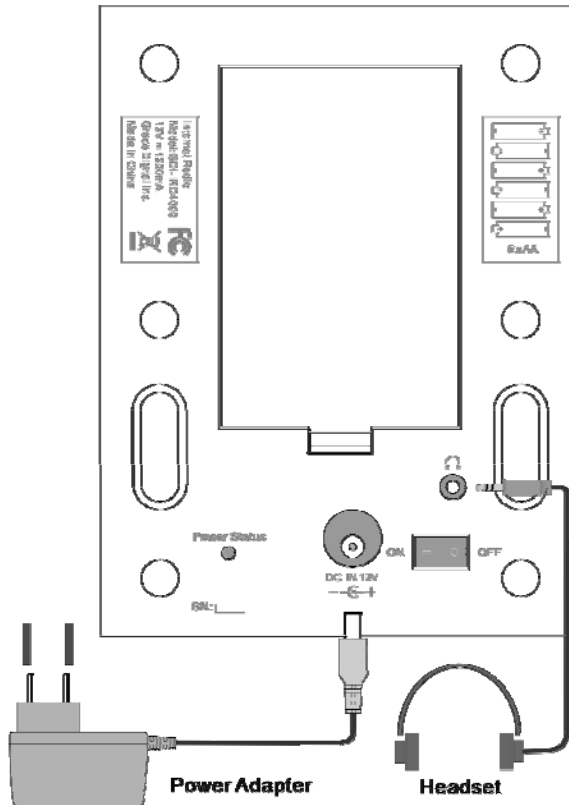
Remote Control

User's Guide

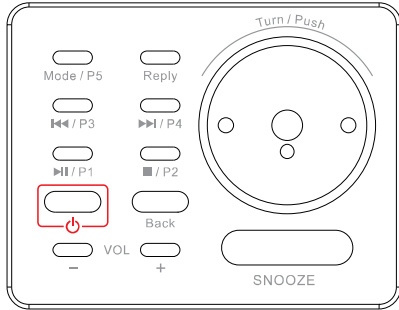
Optional: 6 x Rechargeable AA NiMH batteries *not included*.

Refer to page 11 for further battery details

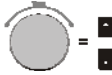
Radio Connections



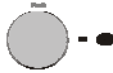
Radio and remote control functions and controls



Standby / ON



UP / DOWN to Move or Change



OK press to Select



BACK push to return to Menu



Quick-key to Main Menu



Pandora "Thumbs Down" selection



Pandora Skip Song selection



Pandora "Thumbs Up" selection



Mute



- VOL+ Volume - / +



Preset 1 to 10

P1 ... P5

Preset 1 to 5



Alarm / Timer



Play / Pause



Stop



Next / Previous

HINTS:

- * Press the **BACK Button** to go back to previous menu/screen.
- * Use the **SCROLL Knob** or the **UP/DOWN buttons** to select and push the **Knob (OK)** or press the **OK button** to decide/execute.

Display icons

Icons are displayed on the bottom row of the LCD display. The meaning of these icons are as explained below:



'Internet Radio' mode and is playing a live stream



Battery status indicator



Mute indicator



Sleep timer



Alarm-set indicator



'Media Player' mode. Media controls are active



'Internet Radio' mode and is playing on demand content



Repeat mode enabled



Shuffle mode enabled

Steps to Connect Your Radio to Your Wireless Network

Getting Started

Step 1 - Power up the radio (Power Adapter, NiMH & LED Indicator)

You can power your radio by connecting to the AC Power on the back of your ALLEGRO or using 6 x AA 6 x AA NiMH (rechargeable) batteries. The radio can be switched on and off with the STANDBY/ON button. The adapter can be used while rechargeable NiMH batteries are installed. IF you choose to use Rechargeable NiMH batteries to power your ALLEGRO the built-in recharging circuit will charge the batteries when the AC power adapter is plugged in.

WARNING: Installing non-rechargeable (alkaline) batteries or connecting a power supply with a different rating may cause permanent damage to the ALLEGRO and may be hazardous to the User. THEREFORE, for best operation, your safety & to protect your Allegro from damage:

1. Install 6 new AA NiMH (rechargeable) batteries with the same capacity ONLY (not included)
2. Do **NOT** mix NiMH batteries that may have different capacities
3. Do **NOT** mix old and new OR charged and empty/partially charged NiMH batteries
4. Do **NOT** install Alkaline (disposable) batteries in your Allegro
5. Remove batteries from your Allegro when not in use for extended periods
6. Use only the power adapter supplied with your Allegro

LED Indicator & Power Status

On the back panel of your radio you will find an LED Indicator. The LED indicates the power status by changing color (Green or Red) and state (flashing or lights steady) depending if rechargeable NiMH, No batteries and/or AC adapter are in use. Refer to the following chart for details:

INDICATOR	STATUS
Flashes RED	Alkaline batteries installed in error
Lights GREEN	NiMH batteries fully-charged
Lights RED	NiMH batteries charging in process
Flashes GREEN	No batteries installed
*Install new AA NiMH (rechargeable) batteries ONLY	

Once powered on, the display on the front of the radio will light up and show:

Grace Digital Radio

After a few seconds, the screen will change to show :

**Initializing
Network**

After a few seconds, the screen will change to show:

**Scan for networks
Enter network
View Config
Edit Config**

Step 2 - Scan for a wireless network connection

When the display show <Scan for networks>, press the 'Select' button. (NOTE: IF you make an error at any point, press the 'Back' button to return the previous screen)

The ALLEGRO will now scan for all available wireless networks and will display:

Scanning
|||||

IF the radio does not find a wireless network router, the display will show:

**No networks
Found**

If this happens after subsequent attempts you should setup your wireless access point working - see the instructions supplied with your wireless network.

When ALLEGRO finds your wireless network, the display will show ESS-ID for the access point on the screen - this name is the name ascribed to the access point by the person who set up the network - for example:

A rectangular box with a black border containing the text "< My Home Network >" in a bold, black, sans-serif font.

It is possible, and in some locations highly likely, that your radio will find more than one wireless access point, in which case you can choose which one you want to connect to. Turn the knob on your radio to see the ESS-ID for each access point your radio has found.

For optimal performance you may want to check your home network settings to make sure your radio is on a deferent channel than your neighbors. To do this please consult your Wi-Fi router owner's manual

Step 3 - Connect to the wireless network

When the ESS-ID for the access point you want to connect to is displayed on the screen, press **OK**.

IF your network is not configured to require an encryption code, the screen should display:

A rectangular box with a black border containing the text "Connecting to Network" in a bold, black, sans-serif font.

then:

A rectangular box with a black border containing the text "Network OK" in a bold, black, sans-serif font.

IF the screen displays either WEP or WPA, a password is required:

A rectangular box with a black border containing the text "Enter WEP key" in a bold, black, sans-serif font.

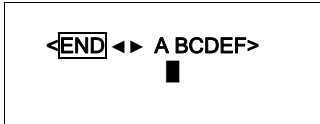
OR

A rectangular box with a black border containing the text "Enter WPA key" in a bold, black, sans-serif font.

Then the network is using one of the encryption systems: Wired Equivalent Privacy (WEP) or WiFi Protected Access (WPA or WPA2). You therefore need to enter the correct WEP or WPA password on your ALLEGRO radio to communicate with your network.

Only the person who set up the network in the first place knows this password; if that person is not you then you need to find out the password. You can do this by checking with the Customer Service of your internet provider or the manufacturer of your wireless router.

After approximately 3 seconds, the display goes into the password entry mode:



To enter the password, use the **SCROLL KNOB** or the **UP/DOWN** buttons to select each letter/number/symbol of the password in turn, pressing **OK** after each letter.

NOTE: WEP and WPA passwords are upper and lower case sensitive and **MUST** be entered exactly

HINT: Use the 'Back' button to erase incorrect characters as you may have entered.

IF the display shows: "Invalid key" or "Network Error", an incorrect password has probably been entered.

After entering the final letter/number/symbol, scroll to find and select **END** and press **OK**.

Once the password is entered correctly, your ALLEGRO should now be able to connect to the network.

Your radio should now be able to connect to the selected network without having to re-enter a password. Your password will be saved in your Grace radio even if a power outage occurs. You will have to alter your password however, should you attempt to connect to an alternative wireless network

NOTE: IF you would like to give your radio a static IP address then please see the '**Network config**' section under the '**Setting**' section.

Choosing a radio station to listen to

1. Press the 'Select' button. **NOTE:** IF you make an error at any point, press the 'Back' button to return to the previous screen

Main Menu



2. If the screen does not show < Internet radio > as shown above, turn the knob until it does. *Please note that the 'My Stuff' folder will only show up after you register your radio onto our web site.*

3. Press the 'Select' button, to choose <Internet radio>.

4. Turn the knob to choose from <Sirius>, <Location> or <Genre>.
5. Press the 'Select' button to choose the option you want.

<Sirius> allows you to choose a Sirius Internet Radio station if you have an Internet Radio enabled Sirius Radio subscription. *Please see www.sirius.com for more info.*

<Location> allows you to choose radio stations as provided by country which you choose from the list.

<Genre> allows you to choose radio stations according to their content, for example Classic Rock, Sport, News, etc.

<Sirius>

If you are an active Sirius subscriber with a package that includes the ability to listen to Sirius internet radio on a non computer based product you will be able to listen to those stations on the Grace Digital radio. You can either enter your Sirius user name and password onto the Grace Digital website or through this portion of the radio's menu.

When you are in the Sirius menu, press the select button to choose <log in> or <change user>. When prompted you can enter your Sirius user name and password (user names and password are case sensitive). After your user name and password is accepted, go back to the main menu and select <Sirius>. You will now be able to view the Sirius internet radio stations. Scroll to the stations you would like to listen to and press the select button inward to listen to that station.

<Location>

1. Turn the knob until the display shows the region you want (or select 'All' to display all countries),
2. Press the 'Select' button.
3. Turn the knob until the display shows the country you want.
4. Press the 'Select' button.
5. Turn the knob until the display shows the station you want.
6. Press the 'Select' button and wait until the radio connects to that station.

Note that some radio stations do not broadcast 24 hours per day, and some stations are not always on-line.

If this station has on-demand content (that is, it gives the option of listening to programs which have already been broadcast), see "Stations which enable you to choose what you listen to".

<Genre>

1. Turn the knob until the display shows the type of content you want to listen to, then press the 'Select' button.

2. Turn the knob until the display shows the station you want.
3. Press the 'Select' button and wait until the radio connects to that station.

NOTE some radio stations do not broadcast 24 hours per day, and some stations are not always on-line.

If this station has on-demand content (that is, it gives the option of listening to programmes which have already been broadcast), see "Stations which enable you to choose what you listen to".

Choosing a Pandora radio station (Personal Radio)

This section allows for the new Grace Digital Personal radio services. The current service is Pandora. Prior to this feature working you must first register your radio on the Grace web site. Please see registering your radio. After this is complete you can enter in your Pandora user name and password. Please check out www.pandora.com to check out this service

<Stations>

1. Press the select button and you can choose any of the Pandora stations that you have created on your Pandora account.

<Create Stations>

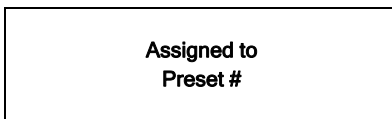
1. Press the select button and you can create a new station by typing in a word.
2. After you type in the word, select (end) in the menu. After a few seconds it will show you artist, songs and albums with names similar to the word you initially entered.
3. Choose desired selection. This function will also create a new station on your Pandora web site.

Changing the volume

When a radio station is playing increase the volume by turning the Volume Knob, clock wise.

Storing a radio station in a preset Preset on Radio

When a station is playing, hold down one of the preset buttons (1-5) until the screen shows:



* Where "#" is the number of the preset button you held down.

Preset on Remote Control

1. When a station is playing, press the and hold one of the numbers (1-10) on the remote control.
2. Select a number to assign the station to (1-10).

** Please note presets 1-5 are the same for the remote & radio and can be stored using either the radio or remote.*

Playing a preset radio station

When your radio is powered on and connected to your Wi-Fi network, briefly press the preset button (1-5) on the radio, or 1-10 on the remote control, for the station you want to listen to.

** Note, do not hold the button down - if you do then the station currently playing will overwrite the one stored in the preset; *be careful*.*

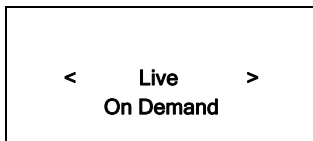
Requesting a station that is currently unavailable

If you want to listen to a particular radio station which is currently not available online, you can visit the Grace Digital Audio web site at www.grace.reciva.com and enter in a request to add the station to the list.

Please note that some radio stations do not pass the audio stream quality test so we are not able to add every request. Typically we can add a station within 10 business days if the station provides us a quality stream. You can check back on our web site periodically to see if the station has been added.

Stations which allow you to choose what you listen to

Some radio stations can provide a number of options associated with their station; for example, some stations enable you to listen to programs that have already been broadcast. When you select a radio station that has this ability, the station does not start playing immediately, but instead the display shows:



1. Turn the knob to choose <Live> or <On Demand>, then press the 'Select' button. IF you choose <Live> then the radio plays the current output from this station as normal.

If you choose <On Demand> more screens are displayed and you can choose what you want to listen. What is displayed will depend on the station you have chosen - the following steps are only a guide.

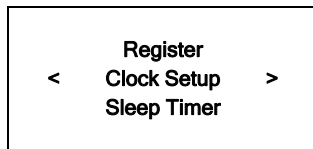
2. When you choose <On Demand>, the display shows the names of the programs. Turn the knob to choose the program you want, then press the 'Select' button.
3. When you have chosen the program you want to listen to, either it will just start playing, or the display may show a list of days for you to choose from - use the knob to set the day the program was broadcast, then press the 'Select' button.
4. After you have chosen the day, you may be able to choose the Start Time. Set the Start Time using the knob and press the 'Select' button.
5. Program which enable you to choose the time also enable you to fast-forward and rewind to the part you want to into to while the radio is playing. The elapsed time is displayed. Using the Skip forward (P3) or Skip backward (P1). Skip forward or backward in 30 second intervals.

Setting the clock

1. Press the 'Select' button. (Note: if you make a mistake at any point, press the BACK button to go back to the previous screen.)
2. Turn the knob until the display shows <Settings>



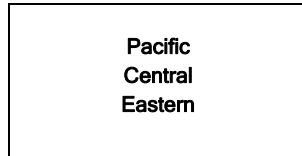
3. Press the 'Select' button.
4. Turn the knob until the display shows <Clock Setup>



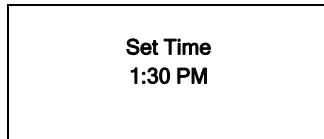
5. Turn the knob until the display says **<Set Time/Date>**



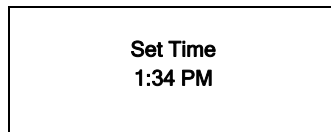
6. Press the 'Select' button.



7. Turn the knob until the correct **time zone** is seen on the display. Push the 'Select' button to set your time zone. Then turn the Menu knob until the hour setting is correct, then press the 'Select' button.



8. Turn the knob until the minute setting is correct, then press the 'Select' button.



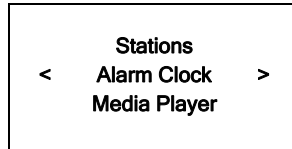
The display shows **<Set Time>** with the new time shown beneath for 3 seconds, then returns to the menu, press the 'Back' button 2 times to go to the main menu.

Setting the alarm

1. Press the 'Select' button.

NOTE: IF you make a mistake at any point, press the BACK button to go back to the previous screen

2. Turn the knob until the display shows **<Alarm Clock>**

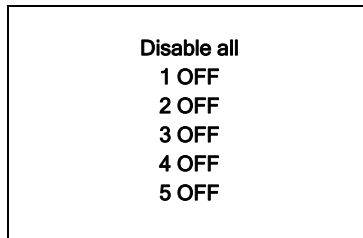


3. Press the 'Select' button.

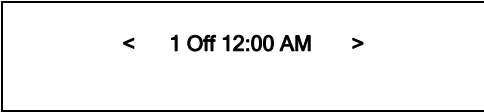
4. Turn the knob until the display shows **<Set Alarm>**



5. Press the 'Select' button.



6. Turn the knob to choose between **<Disable all>** which turns off all alarms or any of the 5 alarms. Press the select button to set the alarm that you want to activate. Below is an example to set Alarm 1. Choose **< 1 Off 12:00 AM>**



< 1 Off 12:00 AM >

7. If you choose “Yes” then the display enables you to set the time for the alarm.




Set Alarm
15:06

8. After selecting < 1 Off 12:00 AM> you can choose the time to set the Alarm.



Set Alarm
12:00 AM

9. Turn the knob until the minute setting is correct, then press the ‘Select’ button.



Alarm Set:
07:45

10. Turn knob to choose how often you want the Alarm to alarm

11. Turn knob to use either the buzzer or the current radio station that is playing to turn on.

The display shows <Alarm Set> with the time of the alarm shown beneath for 3 seconds and then returns to the radio station display.

When in Standby Mode, the Alarm time is shown next to the clock time with brackets.



1:58

Ensure the volume is set to the desired level.

NOTE: when your Alarm turns on, the radio's back light display will turn on and show a menu asking if you want to turn on the radio or not. If within 60 seconds after the display turns on your radio does not connect to your Wi-Fi network and the radio station starts playing, the buzzer will announce instead. For optimal performance choose a radio station that typically buffers very quickly.

Setting the sleep timer

1. Choose Alarm Clock
2. Choose Sleep Timer
3. Then scroll the Select knob form between 30 seconds and 99 hours. When the desired time is reached, Press the select knob. The radio will stay on until the timer is reaches zero.

Configuring 'My Stuff'

Registering your radio / creating an account

1. Your radio must be connected to your Wi-Fi internet connection prior to registering your radio and creating an account. Go to the main menu of your radio. 'Internet radio' will be on the top of the radio's main menu. Go to the bottom of this menu and choose 'settings'. On the next menu scroll the large knob to the right until you see 'register' between brackets {} then push the large select knob inwards. Your radio will create a registration code (key) . Write this number down. If you radio does not provide a registration code (key) then your radio is not currently connected to your Wi-Fi network. Please see the section in this manual on connecting your radio to your Wi-Fi network.

Please note: If you do not create your online account at [HYPERLINK "http://www.grace.reciva.com"](http://www.grace.reciva.com) www.grace.reciva.com within 24 hours of requesting a registration code (key) on your radio you will have to go through the above registration code (key) step on your radio again. You only have to register your radio one time on the above account.

2. Open the website, [HYPERLINK "http://www.grace.reciva.com"](http://www.grace.reciva.com) www.grace.reciva.com from your computer's internet browser.

3. Enter in the code (key) that you obtained from your radio onto the web site and choose 'submit' on the web site. Please note that the web site will show the 'serial number' of your radio after you choose submit, not your registration code (key). You do not need to note this number. Please proceed to creating your account on the web site.

4. After your account is successfully created your radio will be associated with this web site. After you power your radio on/off and choose the 'internet radio' menu on the radio (this pushes a new menu to the radio) you will now be able to see additional menu choices on the radio (A 'my stuff' folder will be created on the 2nd page of the main menu) as well as the web site.

You will see 3 sections on the web site.

* 'see extra features': This is the area to link your Pandora, live365 and future services to your radio

* 'manage my stuff': This is the area to add your personal streams and to save addition stations. *
'manage my radios': This is the area to delete your radio from your account or to add additional radios.

Configuring "My Profile"

1. Once logged into you Grace Digital Audio account, you can edit your account's details from your 'My Profile' section.
2. Click on the 'My Profile' link to view your account's current information. This information will include various details such as your address, user name, password etc. Edit your details and then click on the 'Update' button to save them.

Configuring "My Stations"

1. It is possible to search for radio stations that are available in Grace Digital Audio's stations' database from Grace Digital Audio's website. Whenever stations are searched for on the website, they will be displayed in a list of search results together with a link to 'Add to My Stations'.
2. Clicking on the 'Add to My Stations' link, will add the station to your account's 'My Stations' list. Clicking on 'My Stations' and then selecting the station will allow you to edit this list.
3. Once you have Internet stations available in your 'My Stations' list, you may play these stations directly from your Internet Radio. These stations will be available on your radio from the menu item: 'Stations > My Stuff > My Stations'. Please note, the stations will only be available to your radio once your radio has downloaded a new stations list. To cause the radio to download a new stations' list, please remove and reconnect the power to your radio.

Configuring "My Streams"

1. Once logged into your Grace Digital Audio website account, you can add your own Internet radio streams to your 'My Streams'.
2. Clicking on 'My Streams' will prompt you to enter the station's name and its media stream URL. The media stream URL should be a link to a website's actual audio stream. If you have any doubt about locating the media stream URL from a webpage, then please refer to the FAQs section on Grace Digital Audio's website, www.grace.reciva.com. You can also contact the website of the station that you want to listen to, to obtain the exact URL.
3. Once you have Internet radio streams available in your 'My Streams' list, you may play these stations from your Internet Radio. These stations will be available on your radio from the menu item: 'Stations >

My Stuff > My Streams'. Please note, the streams will only be available to your radio once your radio has downloaded a new stations' list. To cause the radio to download a new stations' list, please remove and reconnect the power to your radio.

Configuring 'My Podcast'

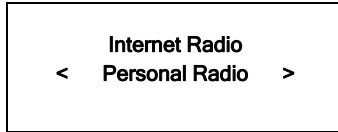
1. It is possible to add audio podcasts (RSS feeds) to your Grace Digital Audio account that can be accessed on your Internet radio. To add a podcast, simply login to your account and then click on the 'My Podcasts' link.
2. From your 'My Podcasts' section, you can add your chosen podcast by entering in the podcast's name and its URL as prompted by the website. Please note, the podcast URL will have to be a direct RSS feed which will end with the '.xml' extension e.g. <http://someurl.com/podcast.xml>
3. Once you have podcasts available in your 'My Podcasts' list, you may access these feeds from your Internet Radio. These podcasts will be available on your radio from the menu item: 'Stations > My Stuff > My Podcasts'. Please note, the podcasts will only be available to your radio once your radio has downloaded a new stations' list. To cause the radio to download a new stations' list, please remove and reconnect the power to your radio.

Configuring "My Pandora"

1. In order to use the Pandora feature on the Grace Digital Internet radio you must 1st have an active Pandora account. You can create a Pandora account at www.pandora.com or www.grace.reciva.com.
2. Grace Digital is not affiliated in any way with Pandora nor do we guarantee any of Pandora's services or streams. Please see Pandora's web site for information on how to update and activate your Pandora services. After you have successfully signed up with Pandora's service that allows you to use a stand alone internet radio you are now ready to go to the next step. Please note that if you have any questions, concerns or problems with Pandora's services please contact Pandora directly.
3. Log onto your Grace Digital Audio account. Please note that you must follow the steps in 'Registering An Account On Grace Digital Audio's Website' prior to upgrading your radio to be able to receive Pandora music stream.
4. After you have successfully logged into www.grace.reciva.com and your radio is registered, you can choose 'extra features'. You will then be prompted to add your Pandora 'user name' and 'password'. After you have done this please unplug your radio from power and wait 15 minutes. Plug the radio back in and turn the radio on to listen to your Pandora stations on your Grace digital radio.

5. You can then listen to your Pandora music section via the following menu choices.

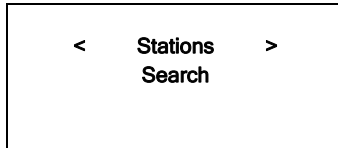
Select '**Personal Radio**'



6. Select '**My Pandora**'



6. Select '**Stations**'



Accessing Pandora Feedback Menu

1. While listening to one of your Pandora radio stations choose the 'Retrieve' button on the internet radio. The 'Reply' button will allow you to perform the similar choices as you do with your regular Pandora on line account. Choosing the reply button will allow you to thumbs up / down a song, sleep up to 6 songs an hour, book mark songs and artist etc.

- Bookmark Song
- Bookmark Artist
- Give Feedback (thumbs up or down a song)
- Song Details
- Skip Song
- Explain Song

Media Player Quickstart Guide

The Media Player allows you to play unprotected audio files (AAC, AIFF, MP3, RM, WAV, WMA) and play lists (M3U) stored on a networked PC or Apple. It has been verified to work with Windows 2000 and Windows XP, and Apple OSX.

Set Up your Windows PC to enable the radio to access your audio files via Windows Shares

Windows XP

1. Please ensure that your PC is available on the network for your Internet radio, then, using Windows Explorer, locate the folder where your audio files are stored.
2. Right click on the folder.
3. Select 'Properties'.
4. Click on 'Sharing'.
5. Select 'Share this folder on the network' and 'Allow network users to change my files'. Please note, do not try to make your 'My Documents' or any of its sub-folders (e.g. 'My Music') shareable.

Windows Vista

1. Please ensure that your PC is available on the network for your Internet radio.
2. Open the 'Network and Sharing Center' windows from 'Start menu > Control Panel > Network and Sharing Center'.
3. From the 'Network and Sharing Center', under the 'Sharing and Discovery' heading, ensure that the following parameters are set:
 - Network discovery On
 - File sharing On
 - Public folder sharing On
 - Password protected sharing Off
4. Open 'Windows Explorer' by right clicking on the Start menu and selecting 'Explore'. Create a new directory in the 'Public' directory and move your media files into this new directory.

5. Right click on the directory just created and select 'Share...'. Ensure that the directory is listed as being shared, if not, click on the 'Share' button.
6. Right click on the directory just created and select 'Properties'. From the 'Properties' window, click the 'Sharing' tab and then click the 'Advanced Sharing...' button. From the 'Advanced Sharing...' window, click to check the 'Share this folder' option.

Apple OSX

1. The MAC will require Windows File Sharing. MAC OS 9 and earlier versions of the OS will need extra software to use Windows File Sharing. MAC OS X 10.2 and later versions have Windows File Sharing built into the OS. Please ensure that your PC is available on the network for your Internet radio. Your radio will also need to be able to access directories that require a user name and password.

2. Setup Windows File Sharing on the MAC:

From the 'Dock', click 'System Preferences'. From the 'System Preferences' window, under the 'Internet & Network' section, click 'Sharing'.

From the 'Sharing' window, do the following:

- Under the 'Services' section, enable 'Personal File Sharing' and 'Windows Sharing'. Also, click 'Start' for each of these services.
- Under the 'Firewall' section, keep the firewall off.
- Under the 'Internet' section, keep 'Internet Sharing' off.

3. Setup Account:

From the 'System Preferences' window, under the 'System' section, click 'Accounts'. Select an account and remember its 'Short Name' and password. This will be used for the radio to connect to the MAC.

4. Directory Setup:

From the 'Dock', click 'Finder'. From 'Finder', click 'Applications > Utilities'. Click on 'More Info' for 'Directory Access' and ensure that it is 'Read/Write' enabled. Double-click on 'Directory Access' and enable the following:

- AppleTalk
- LDAPv3
- SLP
- SMB/CIFS

Also, for 'SMB/CIFS', click 'Configure' and select an appropriate workgroup.

Copy and paste the mp3 media files to 'Documents' in the 'Finder' window.

Turn on 'AirPort' (or wireless sharing).

Wait for a few minutes for the changes to take place.

5. The radio should now be able to access the MAC from its 'Media Player > Windows Shares' menu after entering in the MAC account's short name and password on the radio.

Locate the shared audio files using the radio

1. Power up the radio.
2. Wait for 'Stations' to be displayed on the radio, or press the BACK button repeatedly until 'Stations' is displayed.
3. Turn the knob until the radio display shows 'Media Player'.
4. Press the SELECT button and turn the knob until 'Windows Shares' is displayed.
5. Press the SELECT button, turn the knob until 'Scan for PCs' is displayed and press SELECT again.
6. The radio will now display 'Finding PCs'. Once the radio has finished, turn the knob to highlight the correct PC.
7. Press the SELECT button. The radio will search for shared folders.
8. Turn the knob to highlight the correct shared folder and press SELECT.
9. The radio will display 'File Scan...' as it scans through the media files in the shared folder. Text on the bottom row of the display will change to indicate that the file scan is in progress. If you have a large number of audio files this could take several minutes to complete.
10. Once the radio has finished scanning, it will display 'By Album'. You can now browse through the scanned media files, which will now be organized 'By Album', 'By Artist' and 'Play lists' - if available.

NOTE: The first time the file scan is done a file called '.reciva_media_cache' is written to the folder where the audio files are stored. This is in order to speed up subsequent file scans.

Listening to a single shared track

1. Turn the knob until 'By Artist' is displayed.
2. Press the SELECT button.

3. Turn the knob until the required artist is displayed.
 4. Press the SELECT button.
 5. Turn the knob until the required album name is displayed.
 6. Press the SELECT button. '[Add to Queue]' will be displayed.
 7. Turn the knob until the required track is displayed.
 8. Press the SELECT button. The track will begin playing.
-

Listening to a complete shared album

1. Turn the knob until 'By Artist' is displayed.
 2. Press the SELECT button.
 3. Turn the knob until the required artist is displayed.
 4. Press the SELECT button.
 5. Turn the knob until the required album name is displayed.
 6. Press the SELECT button. '[Add to Queue]' will be displayed.
 7. Press the SELECT button. The album will begin playing.
-

Arranging (Queuing Up) tracks for playback later

1. Highlight the required track.
2. Press the SELECT button. 'Track Added To Queue' will be displayed.

Arranging (Queuing Up) albums for playback later

1. Highlight the required album.
2. Press the SELECT button.
3. Turn the knob until '[Add To Queue]' is displayed.
4. Press the SELECT button. 'Tracks Added to Queue' will be displayed.

Controlling playback

1. Use the STOP button to stop playback.
2. Use the PLAY/PAUSE button to either pause a currently playing track or to restart a currently paused track or to restart a stopped track.
3. Use the SKIP TO PREVIOUS TRACK button to start playback of the previous track in the queue.
4. Use the SKIP TO NEXT TRACK button to start playback of the next track in the queue.

Browsing the list of tracks currently arranged (queue up) for playback

1. Press the BROWSE button. The currently playing track name will be displayed.
2. Turn the knob to see which tracks are queued up for playback.
3. If you want to jump to a particular place in the queue then press the SELECT button when the required track is displayed.

Removing tracks from the list (queue)

1. Press the BROWSE button. The currently playing track name will be displayed.
2. Turn the knob to select the track you want to remove from the queue.
3. Press and hold the STOP button for 2 seconds and the radio will display: 'Delete Track?'
4. Turn the knob to highlight 'Yes' or 'No'.
5. Press SELECT to confirm whether you actually want to delete the track from the queue.
6. If 'Yes' was selected then 'Removed From Queue' will be displayed.
7. To remove all tracks from the queue, keep pressing BACK until the 'Media Player' menu item is selected, press SELECT and then turn the knob to select 'Clear Queue' and press SELECT again.

Playing tracks in random order

1. Select the individual tracks as described previously.
2. Navigate to top-level menu item 'Media Player' using the SELECT and BACK buttons.
3. Press the SELECT button.
4. Turn the knob until 'Playback Mode' is displayed.
5. Press the SELECT button.
6. Turn the knob until 'Shuffle' is displayed.
7. Press the SELECT button.
8. Turn the knob to select YES/NO to confirm that shuffle mode should be enabled.

Playing tracks in the list (queue) repeatedly

1. Select the individual tracks as described previously.

2. Navigate to top-level menu item 'Media Player' using the SELECT and BACK buttons.
3. Press the SELECT button.
4. Turn the knob until 'Playback Mode' is displayed.
5. Press the SELECT button.
6. Turn the knob until 'Repeat' is displayed.
7. Press the SELECT button.
8. Turn the knob to select YES/NO to confirm that repeat mode should be enabled.

NOTE: 1. IF the shared folders contain more songs than the Internet Radio memory limit, it will display "Too many files"

2. Repeatedly pressing button P4 will toggle Repeat and Shuffle modes

Set up a Windows PC to allow the radio to access your audio files via a UPnP server

1. If your PC is running Microsoft Windows XP or Windows Vista, then you can use Windows Media Player 11 (WMP11) to act as your UPnP (Universal Plug and Play) media server 1.0. Windows Media Player 11 may be downloaded from Microsoft's website and installed by following the instructions detailed in its installation wizard.
2. Once installed, Windows Media Player 11 will create a library from all the media files available to it on your PC. To add new media files to the library, select 'File > Add to Library... > Advanced Options', click 'Add' and choose the files you wish to add and click 'OK'.
3. You will now need to connect your Internet radio to Windows Media Player 11 and configure it to allow the radio to access your media library. In order to this, you will need to do the following:
 - a. Keep pressing BACK to get to the radio's top-level menu and then turn the rotary knob to select 'Media Player'.
 - b. Press SELECT and then turn the knob to highlight 'UPnP Servers'.

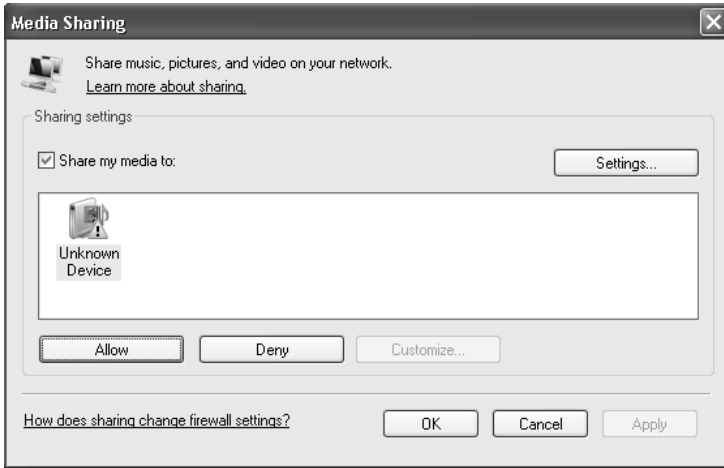
- c. Press SELECT and the radio will scan for all available UPnP servers. Note, this may take a few seconds for the radio to complete its scan and before the scan has completed, the radio will display '[Empty]'. The radio will continue to display '[Empty]' if no UPnP servers are found.
 - d. After a successful scan, select your UPnP server, by rotating the knob if there is more than one UPnP server, and then press SELECT (note, your radio will display 'Access Denied' at this stage).
4. Your PC will now prompt you that a device has attempted to connect to your UPnP server. In order to allow the radio to have access to the media files, you will need to click the 'Library' tab from Windows Media Player 11 and select the 'Media Sharing...' item to open the 'Media Sharing' window.

Selecting 'Media Sharing...' for Windows Media Player 11:



5. From the 'Media Sharing' window, the radio will be listed as an unknown device. Click on the unknown device listed, then click the 'Allow' button and then click 'OK'.

Allowing your Allegro to connect:



Locating and playing media files using the radio and UPnP

1. Once the UPnP server is configured to share media files with the Internet radio, you can play the files by doing the following on the radio.
2. Keep pressing BACK to get to the radio's top-level menu and then turn the knob to select 'Media Player'.
3. Press SELECT and then turn the knob to highlight 'UPnP Servers'.
4. Press SELECT and the radio will scan for all available UPnP servers. Note, this may take a few seconds for the radio to complete its scan and before the scan has completed, the radio will display '[Empty]'. The radio will continue to display '[Empty]' if no UPnP servers are found.
5. After a successful scan, select your UPnP server, by rotating the knob if there is more than one UPnP server, and then press SELECT.
6. The radio will now list the media categories available from the UPnP server, e.g. 'Music', 'Playlists' etc. Turn the knob to select which category you wish to browse, press SELECT and turn the knob to highlight a sub category and press SELECT again. For example, you could select 'Music' and then 'Album'.

7. Turn the knob to highlight the media files that you wish to play and press SELECT.
8. The radio will display '[Add to Queue]', press SELECT and the radio will add the tracks to its queue and begin playing them automatically.

Browsing the list of tracks currently arranged (queued up) for playback

1. Press the BROWSE button. The currently playing track name will be displayed.
2. Turn the knob to see which tracks are queued up for playback.
3. If you want to jump to a particular place in the queue then press the SELECT button when the required track is displayed.
4. It is important to note here that media files scanned from the radio's 'Windows Shares' function can also be added to the radio's queue.

Arranging (queuing up) UPnP tracks for playback later

1. Highlight the required track.
2. Press the SELECT button. 'Track Added To Queue' will be displayed.

Arranging (Queuing Up) albums for playback later

1. Highlight the required album.
2. Press the SELECT button.
3. Turn the knob until '[Add To Queue]' is displayed.
4. Press the SELECT button. 'Tracks Added to Queue' will be displayed.

Controlling playback

1. Use the STOP button to stop playback.
2. Use the PLAY/PAUSE button to either pause a currently playing track or to restart a currently paused track or to restart a stopped track.
3. Use the SKIP TO PREVIOUS TRACK button to start playback of the previous track in the queue.
4. Use the SKIP TO NEXT TRACK button to start playback of the next track in the queue.

Removing track from the list (queue)

1. Press the BROWSE button. The currently playing track name will be displayed.
2. Turn the knob to select the track you want to remove from the queue.
3. Press and hold the STOP button for 2 seconds.
4. Turn the knob to highlight 'Yes' or 'No'.
5. Press SELECT to confirm whether you actually want to delete the track from the queue.
6. If 'Yes' was selected then 'Removed From Queue' will be displayed.
7. To remove all tracks from the queue, keep pressing BACK until the 'Media Player' menu item is selected, press SELECT and then turn the knob to select 'Clear Queue' and press SELECT again.

Playing tracks in random order

1. Select the individual tracks as described previously.
2. Navigate to top-level menu item 'Media Player' using the 'Select' and 'Back' buttons.
3. Press the 'Select' button.
4. Turn the knob until 'Playback Mode' is displayed.
5. Press the 'Select' button.
6. Turn the knob until 'Shuffle' is displayed.

7. Press the 'Select' button.
8. Turn the knob to select YES/NO to confirm that shuffle mode should be enabled.

Playing tracks in the list (queue) repeatedly

1. Select the individual tracks as described previously.
2. Navigate to top-level menu item 'Media Player' using the 'Select' and 'Back' buttons.
3. Press the 'Select' button.
4. Turn the knob until 'Playback Mode' is displayed.
5. Press the 'Select' button.
6. Turn the knob until 'Repeat' is displayed.
7. Press the 'Select' button.
8. Turn the knob to select YES/NO to confirm that repeat mode should be enabled.

The Media Player allows you to play unprotected audio files (AAC, AIFF, MP3, RM, WAV, WMA) and play lists (M3U) stored on a networked PC. Verified to work on Windows 2000 and Windows XP.

Settings Menu

Choosing desired option from the Configure menu

1. Press the 'Select' button.
(Note: if you make a mistake at any point, press the 'Back' button to go back to the previous screen.)
2. Turn the knob until 'Settings' is displayed
3. Press the 'Select' button.
4. Turn the knob until the display shows the option you want.
5. Press the 'Select' button to choose the option shown on the display. The options are explained below.

<Network Config>

Enables you to scan again for connection to another wireless network, or to manually configure the network parameters. Use this if you take the Internet radio to another building where you want to use it, or if you change your wireless router.

<Upgrade Firmware>

Use this option to download new firmware for the radio from the Grace Digital Audio portal on the Internet. If there is new firmware available, then the radio will prompt you if you want to download it or not. Note, at this stage, you can press the radio's 'Back' button to cancel the radio beginning a firmware upgrade. A Firmware upgrade may take several minutes, so do not switch off the power to the radio until the operation is complete otherwise the radio may become permanently damaged.

<Language>

Allows you to change the display language.

<Factory Reset>

Puts all the settings back to their defaults as they were when the unit left the factory. If you perform a factory reset on your radio you will lose all your presets and your wireless network connection.

Please note that your radio's serial number will still be registered with your Grace Digital internet radio account (assuming you already registered the radio). Any premium station passwords, my stuff stations and podcast that were saved on our web site will be saved all re-associate with your radio after you power back on, log onto your network and download a new stations list.

<Register>

This will display a key that can be used to register the radio on the Grace Digital Audio Customer portal: www.grace.reciva.com

<Clock Setup>

Use this option to set the time, to set an alarm and to view the current alarm setting, see "Setting the alarm".

<Backlight>

Selecting this option will alter the Internet radio's backlight brightness.

1. After selecting the 'Backlight' menu item, the radio will display its list of three menu modes: 'Inactive', 'Active' and 'Standby'. These three states are explained below:
 - The radio gets into its 'inactive' state when there is no button pressed for 30 seconds.
 - The 'active' state is when there is user activity.
 - 'Standby' is the state when the radio has been turned off.
2. Rotate the knob to highlight the desired menu mode and press SELECT.
1. The radio will now display the current backlight value for this menu mode. You can alter this value by rotating the knob to increase or decrease it.

<UPnP>

This menu allows you to change the name of your device. You can name your device any name you want so other UPnP devices will be able to view the name. Such as Greg's Kitchen Radio etc.

<Wi-Fi Strength>

This menu will show the signal strength of your Wi-Fi access point as it is seen by the internet radio. This feature can assist you in locating of your internet radio for optimal performance.

<Other Cool Stuff>

Please note this manual is for the **current shipping version of software (FIRMWARE)**. We periodically release new software (FIRMWARE) with new features and move some menu items around that may reorganize your current menu layout. Please have fun and look around at all the features, enjoy listening to premium music content, talk radio, kids programs, music, NPR, BBC and sports from around the world, and check with us periodically for feature and content updates.

Troubleshooting

Please read the User's Guide carefully to ensure proper use of your system and to enjoy your Allegro's basic and advanced features.

Please keep this User's Guide for future reference. If you experience any trouble with your wireless internet radio ALLEGRO, then you may find it useful to visit the help section on our webpage: <http://grace.reciva.com/> , or <http://www.reciva.com>

If you have trouble connecting ALLEGRO to your wireless network, these steps may help to resolve the problem:

1. Confirm a WiFi connected PC can access and browse the internet (web) using the same network.
2. Check that a DHCP server is available, or that you have configured a static IP address on ALLEGRO. You can configure a static IP address on ALLEGRO using the menu item 'Setting - Network Config - Edit Config', and then select 'No' for 'Auto (DHCP)'.
3. Check that your network's firewall is not blocking any outgoing ports. As a minimum, ALLEGRO needs access to UDP and TCP ports 80, 554, 1755, 5000, 6000 and 7070.
4. Check your access point does not restrict connections to particular MAC addresses. You can view ALLEGRO's MAC address using the menu item 'Setting - Network Config - View Config - MAC address'.
5. If you have an encrypted network, check that you have entered the correct key or pass phrase into ALLEGRO. Remember that text-format keys are case sensitive. If, when attempting to connect to an encrypted network, your radio displays: 'Wireless error' followed by a 5-digit number, then please ensure that you enter the correct pass phrase for the network. If the problem persists, then you may need to consult your network configuration.

If your radio can connect to the network successfully, but is unable to play particular stations, it may be due to one of the following causes:

1. The station is not broadcasting at this time of the day (remember location may be different time zone)
2. The station has reached the maximum allowed number of simultaneous listeners.
3. The station is not broadcasting anymore.
4. The link on ALLEGRO is out of date.
5. The internet connection between the server (often located in a different country) and you is slow.

Try using a PC to play back the stream via the broadcaster's web site. If you can play back the station with a PC, use the form at <http://grace.reciva.com/> , or contact us at <http://www.gracesupport.com/> to notify us so that we can change the station data that may be accessed by your ALLEGRO at a future date.

Specifications

- 802.11b/g WiFi
- Class-D digital amplifier
- 89dB S/N ratio
- Audio output: 8 Watts, 8ohm speaker
- Frequency response: 120Hz - 15KHz \pm 3dB
- 128 x 64 dots display
- 29-Key remote control
- 100 - 240V, 12V 1.2A switching power adapter
- Optional 6 x AA Size NiMH Rechargeable Batteries *(not Included)*
- Built-in with LED Status Indicator Safety Measurements:
 1. Automatic battery type detect & protect
 2. Short-circuit protect
 3. Timeout detect
 4. $-\Delta$ (Delta) V detect
- Built-in Battery Backup Real-Time Clock (RTC)
- Unit dimensions: 5.1" x 6.9" x 4.1"
- Unit weight: 2.2lbs

* Specifications subject to change without notice

License Information and Warranty

This product contains software licensed under version 2 of the GNU Public License and version 2.1 of the GNU Lesser Public License. The source code for this software is available from <http://iradio.gracedigitalaudio.com/gpl>

This product includes technology owned by Microsoft Corporation and under a license from Microsoft Licensing GP. Use or distribution of such technology outside of this product is prohibited without a license from Microsoft Corporation and/or Microsoft Licensing, GP as applicable.

Your Internet Radio is guaranteed against original defects in materials, manufacture and workmanship for one year from the date of purchase.

Under this warranty, repair of any defect or, at the company's discretion, replacement of the faulty component(s) without charge for parts or labor, is agreed. This warranty does not imply any acceptance by Grace Digital, retailers or its agents for consequential loss or damage and specifically excludes fair wear and tear, accident, misuse of unauthorized modification.

This warranty is applicable in the United States only and does not in any way limit the customer's legal rights. Claims and enquiries under the warranty for Grace products purchased outside the USA should be addressed to the local importers or distributors. If you have reason to claim under the warranty please contact your dealer in the first instance. Please retain all original packaging materials for possible future use. We suggest that you complete details of purchase now and keep this information in a safe place for future reference. Grace Digital provides their Canadian, Central & South American dealers, distributors, and retailers with a 1 year warranty.

Warranty (continued)

- Your **ALLEGRO (GDI-IRD4000)** is supported by a limited manufacturer's warranty for product defects in material or workmanship that may be evident under normal use for 1 year from date of purchase from an authorized franchisee or dealer.
- The warranty stated herein is the only warranty applicable to this product. All other warranties, expressed or implied are hereby disclaimed and are limited by the written limited warranties contained herein. Except as provided herein, the manufacturer shall have no liability or responsibility to a customer or any other person or entity with respect to any liability, loss or damage caused directly or indirectly by use or performance of the product or arising out of any breach of this warranty, including, but not limited to, any damages resulting in inconvenience, loss of time, data, property, or profit or any indirect, special, incidental, or consequential damages, even if the manufacturer has been advised of the possibility of such damages.
- In the event of a product defect during the warranty period, return of the product and your sales receipt as proof of purchase date for your **GDI-IRD4000** unit is required and shall, at the discretions of the manufacturer, result in: (a) correction of the defect by repair without charge for parts and labor; (b) replacement with the same or similar design; or (c) refund for the purchase price if purchased directly and returned within 30 days of purchase. All replaced parts and products, and products, on which a refund may be made, become the property of the manufacturer. New or reconditioned parts/ products should be warranted for the remainder of the original warranty period.
- **The warranty does not cover:**
 - (a) damage or failure caused by or attributed to acts of God, abuse, accident, misuse, improper installation or improper maintenance, alteration, lightning or excessive voltage or current;
 - (b) any repairs other than those provided by a **GDI-IRD4000** authorized service facility;
 - (c) consumables such as fuses or batteries;
 - (d) cosmetic damage;
 - (e) transportation, shipping or insurance costs;
 - (f) costs of product removal, installation, set-up, service adjustment or re-installation.
- Customers are responsible for any shipping costs related to product return, repair and/or refund.
- Warranty terms may be revised without notification at the discretion of the manufacturer.

Customer Service and Support

- For questions regarding your product please visit us at: www.gracedigitalaudio.com or contact us at: <http://www.gracesupport.com/>

Monday - Thursday 9:00 AM to 4:00 PM (PST)
Friday 9:00 AM to 12:00 PM (PST)

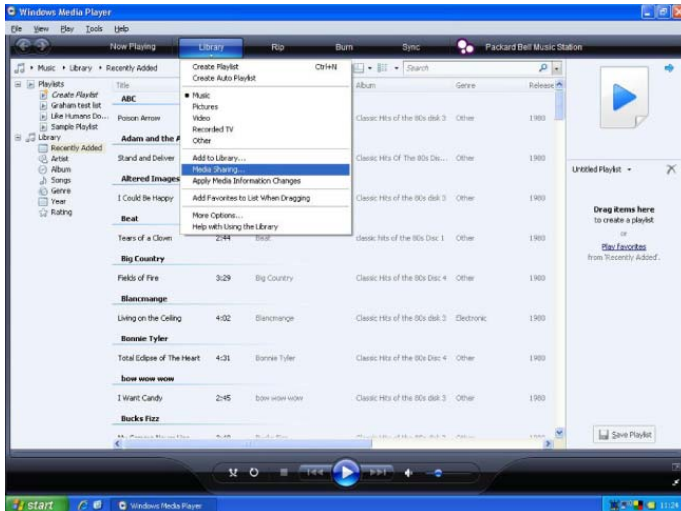
APPENDIX

Step 1: Set Up Media Sharing In Windows Media Player 11

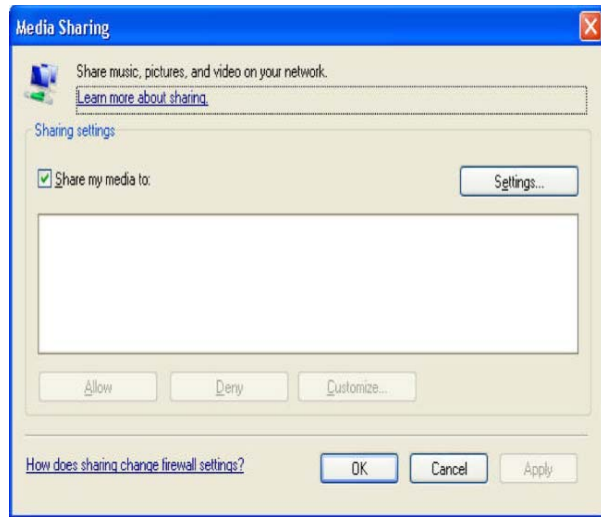
After you download and install Windows Media Player 11 for Windows XP and connect your radio to your network, you need to set up media sharing so that you can share music with your radio.

The following steps describe how to set up media sharing in Windows Media Player 11.

1. In Windows Media Player 11, click the small arrow below the Library tab, and then click Media Sharing.

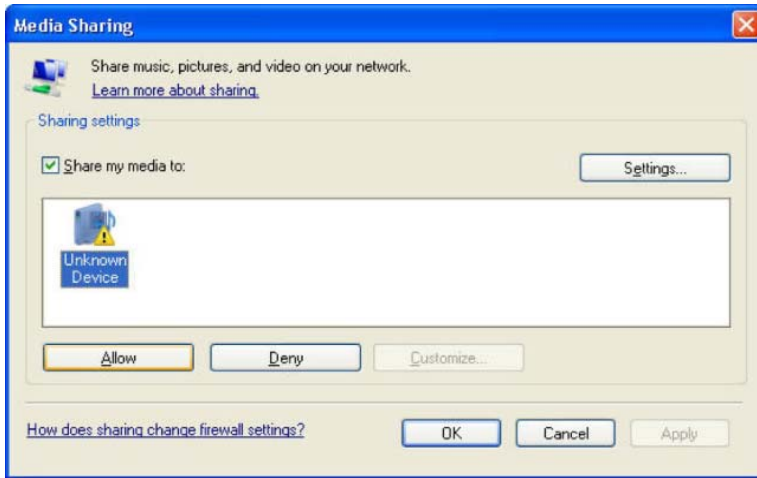


2. In the Media Sharing dialog box, select the Share my media check box.



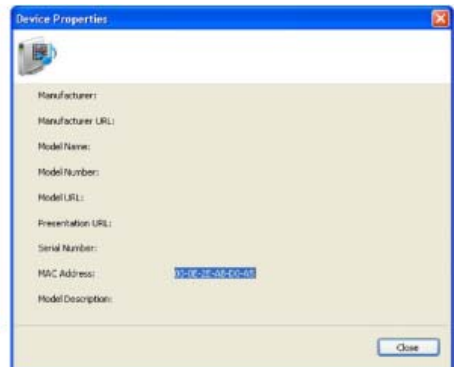
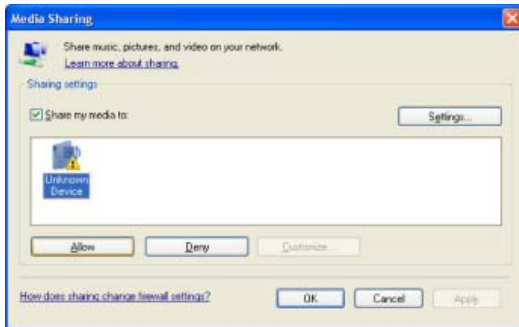
3. In the list that appears below the Share my media to: check box, click your Radio*, click Allow. The selected device will now show a green tick and then click OK.

- If your device does not appear in the list of devices perform the following steps;
 1. From the “Media Player” menu of your internet radio select “UPnP Servers”
 2. A list of available computers will appear.
 3. Select the required computer.



4. The display may show “Access Denied (801)”

5. Your device will now appear in the list. If you want to confirm this is your radio, right click the device and select Properties your radio's MAC address will be shown.



Step 2: Play Music on the Internet Radio

After installing and configuring your radio and Windows Media Player 11, you are now ready to play music wirelessly.

The following steps describe how to play music using the Radio.

1. Use the control, to select “UPnP Servers” from the “Media Player” menu.
 2. Select the computer you wish to play the music files from.
 3. Use the control to browse by All Music, Genre, All Artists, Contributing Artists, Album Artists, Composers, Albums, Play lists, Folders or Star Ratings and then press Select.
 4. Select the music track/tracks you want to play, and then press the ‘Select’ button. Enjoy!
-

GRACE

©2010 Grace Digital Inc. San Diego, CA